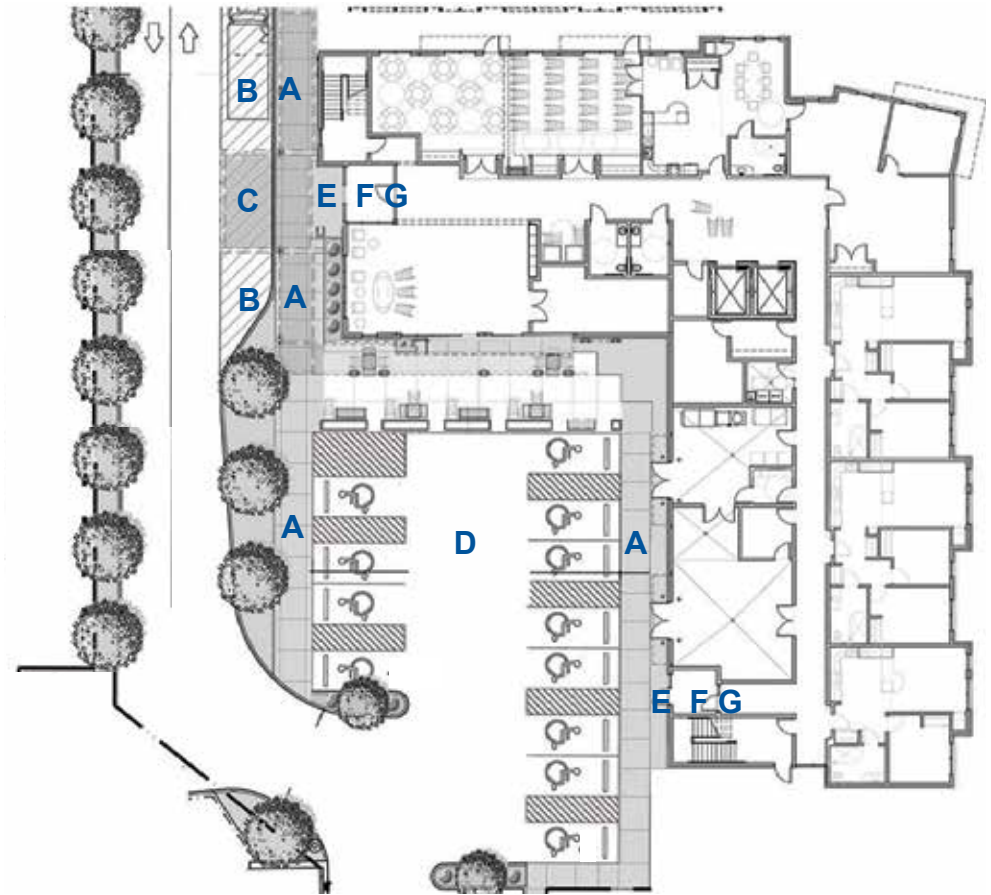


Cotman Vistas: Fully Accessible Entry

Full accessibility is noticeable upon first glance at the Cotman Vistas site. Modifications to sidewalks, entryways, and doors make them usable for all tenants, regardless of disability.

- A** **Wide sidewalks** eliminate barriers and make it easier for tenants to get to their transportation or Euclid Avenue from any point on the sidewalk
- B** The **drop-off area** is out of the main driveway and allows vehicles, including community responsive transit vehicles, to pull up close to the sidewalk, making it easier for tenants to get in or out
- C** **Porte-cochere** covers the main entry and allows tenants to comfortably and efficiently enter and exit vehicles, regardless of the weather
- D** **Handicapped parking spaces** are centrally located, close to the main and secondary entries
- E** **Automatic door openers** on the entry doors remove the need to manually open and hold open heavy doors
- F** **Key cards** can be used to open doors so that tenants with limited reach or low hand dexterity do not have to maneuver keys
- G** **Intercoms** in both entry vestibules allow visitors to call tenants on their phone lines or cell phones to gain entry



A Wide sidewalks at the entry allow tenants who use wheelchairs to easily leave the sidewalk
C Porte-cochere protects tenants from the weather when entering and exiting vehicles



E Automatic door openers allow tenants to enter and exit at their own pace



F, G Key cards and fobs enable tenants to easily open the entry doors