

## Cotman Vistas: Fully Accessible Apartments

Cotman Vistas is home for people with mobility disabilities and their families. These families spend the majority of their time in their units and full accessibility allows them to live as independently as possible.

- A Parcel shelf** in the corridor outside the unit is 34 inches high so tenants can place packages and bags on it as they look for keys and open the unit door
- B Automatic door openers** on the unit entry doors remove the need to manually open and hold open heavy doors
- C Doors** are 36 inches wide with lever handles and swing-away hinges
- D Vinyl composition tile** in the kitchen and bedroom minimizes tripping hazards and is easy for wheelchairs to roll over
- E Low-pile carpet** in the living room is glued directly to the floor to minimize tripping hazards and to make it easy for wheelchairs to roll over
- F A wide travel path** with five-foot turning radius and no steps or barriers allows tenants to easily maneuver through the unit and utilize each room
- G Closets** feature **low shelves** and light-weight **curtains** with pull-rods
- H Paddle light switches** are easy to use; light switches are lowered and **outlets** raised so tenants can use them regardless of mobility
- I Casement windows** are two-feet from the ground and have easy-open handles so tenants can see out their windows, and open and close them
- J Central air and heat** are crucial for tenants with disabilities, as extreme temperatures can exacerbate disabilities and other health conditions



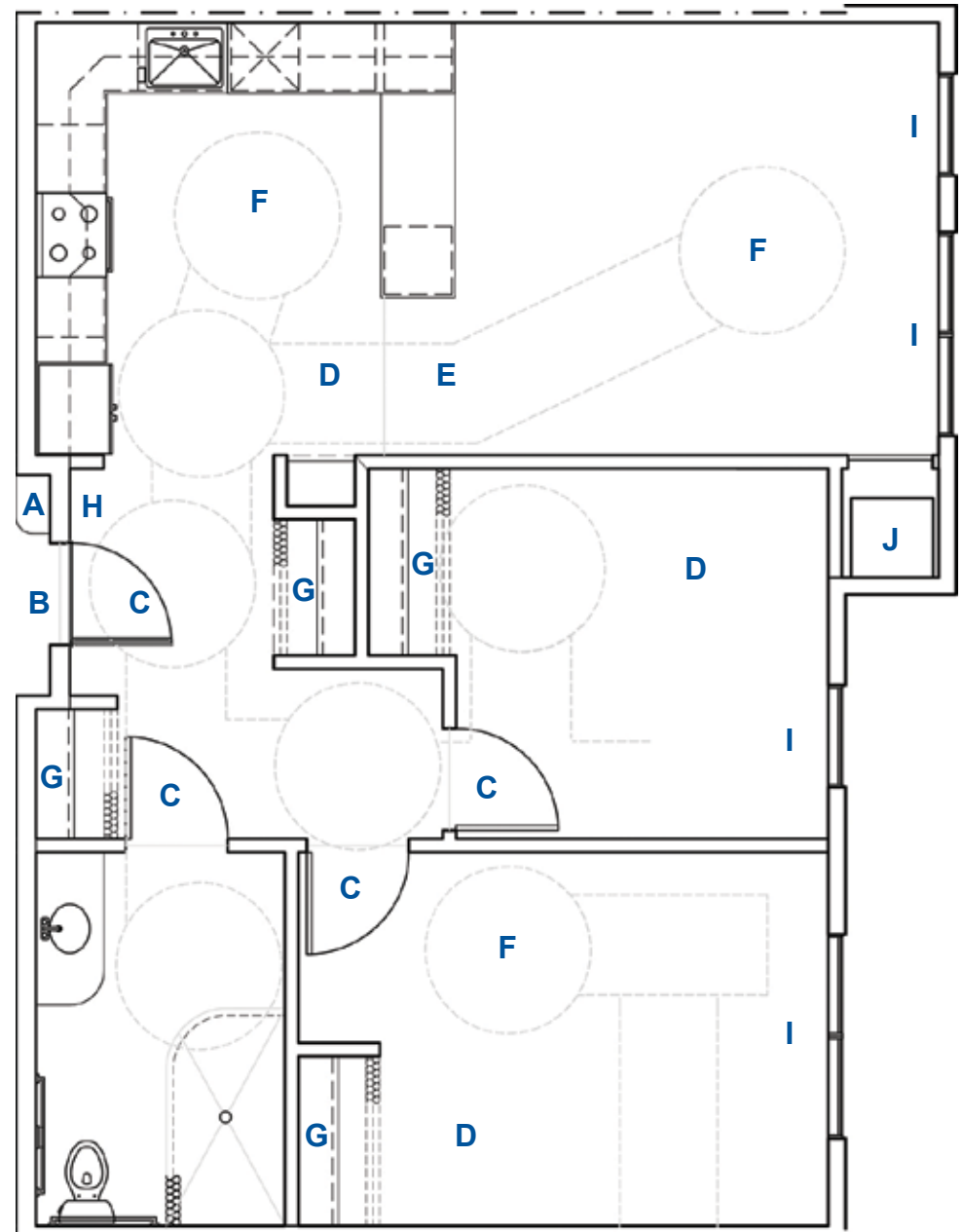
**G** Easy-to-reach paddle light switches



**I** Low, easy-to-open windows



**F** Closets use curtains with pull-rods



“I am truly independent here. I can open and close windows. I don’t struggle getting in and out of my apartment. There’s so much space. It officially feels like home.”

**Greg, Cotman Vistas Tenant**