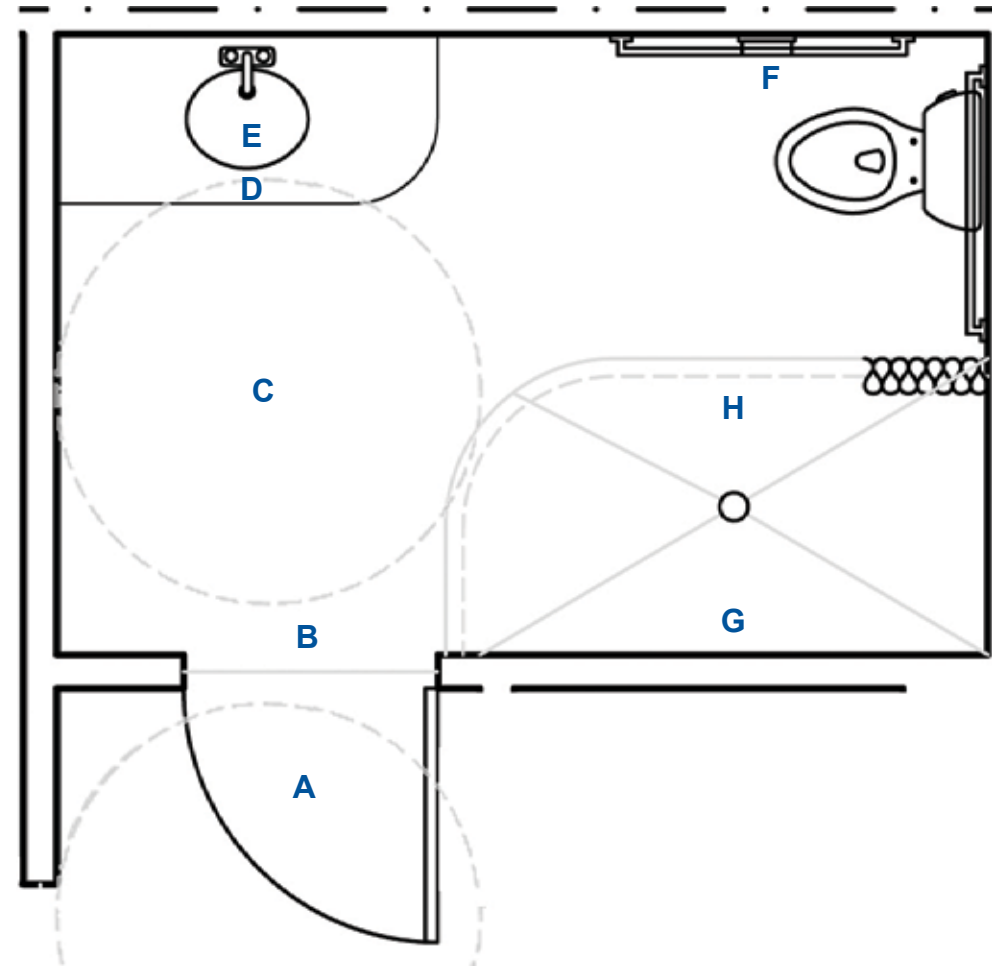


## Cotman Vistas: Fully Accessible Bathrooms

The Cotman Vistas bathrooms are accessible and flexible, with features that can be modified to fit tenants' individual needs. The bathrooms in both the one-bedroom and two-bedroom units are spacious, with an integrated shower area that maximizes the turning radius throughout.

- A** The 36-inch wide **door** swings out so tenants can be reached if they fall or need assistance in the bathroom
- B** **No barriers and low threshold** make the bathroom usable by tenants who use wheelchairs
- C** **Best Bath system** has a pre-engineered sloped floor with consistent drainage
- D** **Vanity** is 32 inches high and open underneath so that tenants can pull a wheelchair under or sit on a chair at the vanity and use the sink; mirror and medicine cabinet are also low
- E** **Sink** has a single-lever handle that is easy for all tenants to use
- F** **Grab bars** are typically mounted next to and behind the toilet; at Cotman Vistas, the walls are reinforced so that grab bars can be mounted exactly where needed by each tenant
- G** **Shower** has handheld shower head so that tenants can easily wash themselves and caregivers can easily assist the tenant
- H** **Roll-in shower** eliminates barriers and allows tenants who use wheelchairs and those who need assistance when bathing to easily shower



- B** No barriers and low threshold
- C** Best Bath system with consistent drainage
- H** Roll-in shower eliminates barriers



- D** Vanity is 32 inches high, open underneath, and has a low mirror
- E** Sink with lever handle



- F** Grab bars mounted per tenant need; walls are reinforced so more can be added
- G** Handheld shower head

“I love the bathroom! The grab bars are where I need them. It’s easy to get in and out of my wheelchair.”  
**Kim, Cotman Vistas Tenant**